

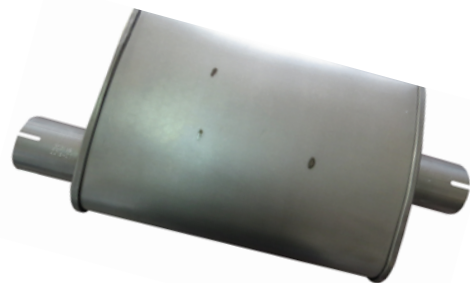
*Speed***FX**[®]

TWENTYEIGHTEEN

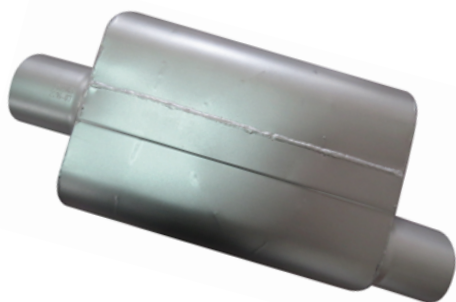


ALUMINIZED STEEL MUFFLERS

- Universal fit
- Natural & silver, aluminized steel-painted finish
- Oval-shaped
- Limited 90 day warranty



Part # 2201AS



Part # 3005AS



Part # 3006AS



Part # 3008AS

| Part # | Item Description | Inlet Position | ID (Inch) | Outlet Position | OD (Inch) | Case Diameter | Case Length | Overall Length |
|--------|-----------------------------|----------------|-----------|-----------------|-----------|---------------|-------------|----------------|
| 2201AS | Rolled edge, Natural Finish | Offset | 2-1/4" | Center | 2-1/4" | 9.5" X 4.5" | 14" | 20" |
| 2202AS | Rolled edge, Natural Finish | Offset | 2-1/4" | Offset | 2-1/4" | 9.5" X 4.5" | 14" | 20" |
| 2501AS | Rolled edge, Natural Finish | Offset | 2-1/2" | Center | 2-1/2" | 9.5" X 4.5" | 14" | 20" |
| 2502AS | Rolled edge, Natural Finish | Offset | 2-1/2" | Offset | 2-1/2" | 9.5" X 4.5" | 14" | 20" |
| 3001AS | Rolled edge, Natural Finish | Offset | 3" | Center | 3" | 9.5" X 4.5" | 14" | 20" |
| 3002AS | Rolled edge, Natural Finish | Offset | 3" | Offset | 3" | 9.5" X 4.5" | 14" | 20" |
| 2203AS | Welded edge, Silver Painted | Center | 2-1/4" | Center | 2-1/4" | 9" X 4" | 13" | 19" |
| 2204AS | Welded edge, Silver Painted | Offset | 2-1/4" | Center | 2-1/4" | 9" X 4" | 13" | 19" |
| 2205AS | Welded edge, Silver Painted | Center | 2-1/4" | Offset | 2-1/4" | 9" X 4" | 13" | 19" |
| 2206AS | Welded edge, Silver Painted | Offset | 2-1/4" | Offset | 2-1/4" | 9" X 4" | 13" | 19" |
| 2503AS | Welded edge, Silver Painted | Center | 2-1/2" | Center | 2-1/2" | 9" X 4" | 13" | 19" |
| 2504AS | Welded edge, Silver Painted | Offset | 2-1/2" | Center | 2-1/2" | 9" X 4" | 13" | 19" |
| 2505AS | Welded edge, Silver Painted | Center | 2-1/2" | Offset | 2-1/2" | 9" X 4" | 13" | 19" |
| 2506AS | Welded edge, Silver Painted | Offset | 2-1/2" | Offset | 2-1/2" | 9" X 4" | 13" | 19" |
| 3003AS | Welded edge, Silver Painted | Center | 3" | Center | 3" | 9" X 4" | 13" | 19" |
| 3004AS | Welded edge, Silver Painted | Offset | 3" | Center | 3" | 9" X 4" | 13" | 19" |
| 3005AS | Welded edge, Silver Painted | Center | 3" | Offset | 3" | 9" X 4" | 13" | 19" |
| 3006AS | Welded edge, Silver Painted | Offset | 3" | Offset | 3" | 9" X 4" | 13" | 19" |
| 3007AS | Welded edge, Silver Painted | Center | 3" | Dual | 3" | 9" X 4" | 13" | 19" |
| 3008AS | Welded edge, Silver Painted | Dual | 3" | Offset | 3" | 9" X 4" | 13" | 19" |

BLACK STEEL MUFFLERS

ENGINE PARTS & ACCESSORIES

- Universal fit
- Black steel finish
- Made in the USA
- Limited 90 day warranty



Part # 424410

Features:
 Body height (inches): 4.00
 Body length (inches): 13.00
 Body width (inches): 9.75
 Finish: Black
 Inlet diameter (inches): 2.25
 Inlet position: Offset
 Material: Aluminized Steel
 Muffler series: 40 Series
 Outlet diameter (inches): 2.25
 Outlet position: Center
 Shape: Case
 Sound level: Aggressive Sound



Part # 425410

Features:
 Body height (inches): 4.00
 Body length (inches): 13.00
 Body width (inches): 9.75
 Finish: Black
 Inlet diameter (inches): 2.50
 Inlet position: Offset
 Material: Aluminized Steel
 Muffler series: 40 Series
 Outlet diameter (inches): 2.50
 Outlet position: Center
 Shape: Case
 Sound level: Aggressive Sound



Part # 425430

Features:
 Body height (inches): 4.00
 Body length (inches): 13.00
 Body width (inches): 9.75
 Finish: Black
 Inlet diameter (inches): 2.50
 Inlet position: Offset
 Material: Aluminized Steel
 Muffler series: 40 Series
 Outlet diameter (inches): 2.50
 Outlet position: Offset
 Shape: Case
 Sound level: Aggressive Sound



Part # 424430

Features:
 Body height (inches): 4.00
 Body length (inches): 13.00
 Body width (inches): 9.75
 Finish: Black
 Inlet diameter (inches): 2.25
 Inlet position: Offset
 Material: Aluminized Steel
 Muffler series: 40 Series
 Outlet diameter (inches): 2.25
 Outlet position: Offset
 Shape: Case
 Sound level: Aggressive Sound



Part # 4304020

Features:
 Body height (inches): 4.00
 Body length (inches): 13.00
 Body width (inches): 9.75
 Finish: Black
 Inlet diameter (inches): 3.00
 Inlet position: Center

Material: Aluminized Steel
 Muffler series: 40 Series
 Outlet diameter (inches): 2.50
 Outlet position: Dual
 Shape: Case
 Sound level: Aggressive Sound



EXHAUST CLAMPS

- Material: T304SS
- Limited one year warranty



| Part # | Diameter | Length |
|--|---------------|--------|
| Lap-Joint Band Clamps (T304SS Belt, M10 Mild Zinc Nuts & Bolts, H Gasket is Zinc Alloy material) | | |
| EA001 | 2.000"-2.125" | 3.00" |
| EA002 | 2.250"-2.375" | 3.00" |
| EA003 | 2.500"-2.625" | 3.00" |
| EA004 | 3.000"-3.125" | 3.00" |
| EA005 | 3.500"-3.625" | 3.00" |
| EA006 | 4.000"-4.125" | 3.00" |
| EA007 | 4.500"-4.625" | 3.00" |
| EA008 | 5.000"-5.125" | 3.00" |
| EA009 | 5.500"-5.625" | 3.00" |
| EA010 | 6.000"-6.125" | 3.00" |

| Part # | Diameter | Length |
|--|----------|--------|
| Stainless Steel U-Band Heavy Duty Clamps | | |
| EA011 | 2.00" | -- |
| EA012 | 2.25" | -- |
| EA013 | 2.50" | -- |
| EA014 | 3.00" | -- |
| EA015 | 3.50" | -- |
| EA016 | 4.00" | -- |
| Band Clamps | | |
| EA017 | 2.25" | 1.22" |
| EA018 | 2.50" | 1.22" |
| EA019 | 3.00" | 1.22" |
| EA020 | 3.50" | 1.22" |
| EA021 | 4.00" | 1.22" |
| EA022 | 5.00" | 1.22" |

GLASSPACK MUFFLERS

- Heavy Gauge Steel Construction
- High Temperature Red Painted Finish
- Deep, Rich Sound
- Limited 90 day warranty



| Part # | Inlet Dia | Inlet Position | Outlet Dia | Outlet Position | Body Dia | Body Length | Overall Length | Material | Finish |
|--------|-----------|----------------|------------|-----------------|----------|-------------|----------------|------------|-------------|
| 2010 | 2" | Center | 2" | Center | 3.5" | 8" | 14" | Mild Steel | Red Painted |
| 2020 | 2" | Center | 2" | Center | 3.5" | 18" | 24" | Mild Steel | Red Painted |
| 2030 | 2.25" | Center | 2.25" | Center | 3.5" | 8" | 14" | Mild Steel | Red Painted |
| 2040 | 2.25" | Center | 2.25" | Center | 3.5" | 18" | 24" | Mild Steel | Red Painted |
| 2050 | 2.5" | Center | 2.5" | Center | 3.5" | 8" | 14" | Mild Steel | Red Painted |
| 2060 | 2.5" | Center | 2.5" | Center | 3.5" | 18" | 24" | Mild Steel | Red Painted |
| 3010 | 3" | Center | 3" | Center | 4" | 8" | 14" | Mild Steel | Red Painted |
| 3020 | 3" | Center | 3" | Center | 4" | 18" | 24" | Mild Steel | Red Painted |



Straight Cut / Rolled Edge



Straight Cut / Beveled Edge



Angled Cut / Sharp Edge



Angled Cut / Beveled Edge

EXHAUST TIPS

- 304 stainless steel
- Polished silver or powder coated black finish
- Bolt-on installation
- Polished Finish - Limited lifetime warranty
- Powder Coat Finish - 1 year warranty

| Part # | Finish | Color | Cut Type | Edge Type | Inlet Dia (Inch) | Outlet Dia (Inch) | Length (Inch) | Installation Type | Warranty |
|--------|---------------|--------|--------------|--------------|------------------|-------------------|---------------|-------------------|------------------|
| 201S | Polished | Silver | Angled Cut | Rolled Edge | 2.5 Inch | 3 Inch | 7 Inch | Bolt-On | Limited Lifetime |
| 202B | Powder Coated | Black | Angled Cut | Beveled Edge | 2.5 Inch | 3.5 Inch | 12 Inch | Bolt-On | 1 year |
| 203B | Powder Coated | Black | Angled Cut | Rolled Edge | 2.5 Inch | 3.5 Inch | 12 Inch | Bolt-On | 1 year |
| 204S | Polished | Silver | Angled Cut | Rolled Edge | 2.5 Inch | 3.5 Inch | 12 Inch | Bolt-On | Limited Lifetime |
| 205S | Polished | Silver | Angled Cut | Sharp Edge | 2.5 Inch | 3.5 Inch | 12 Inch | Bolt-On | Limited Lifetime |
| 206S | Polished | Silver | Angled Cut | Sharp Edge | 2.75 Inch | 3.5 Inch | 12 Inch | Bolt-On | Limited Lifetime |
| 301S | Polished | Silver | Angled Cut | Rolled Edge | 3 Inch | 3.5 Inch | 10 Inch | Bolt-On | Limited Lifetime |
| 302S | Polished | Silver | Angled Cut | Sharp Edge | 3 Inch | 3.5 Inch | 12 Inch | Bolt-On | Limited Lifetime |
| 303S | Polished | Silver | Straight Cut | Rolled Edge | 3.5 Inch | 4 Inch | 10 Inch | Bolt-On | Limited Lifetime |
| 304S | Polished | Silver | Angled Cut | Sharp Edge | 3.5 Inch | 4 Inch | 12 Inch | Bolt-On | Limited Lifetime |
| 401B | Powder Coated | Black | Angled Cut | Beveled Edge | 4 Inch | 5 Inch | 12 Inch | Bolt-On | 1 year |
| 402B | Powder Coated | Black | Angled Cut | Rolled Edge | 4 Inch | 5 Inch | 12 Inch | Bolt-On | 1 year |
| 403S | Polished | Silver | Angled Cut | Beveled Edge | 4 Inch | 5 Inch | 12 Inch | Bolt-On | Limited Lifetime |
| 404S | Polished | Silver | Straight Cut | Beveled Edge | 4 Inch | 5 Inch | 12 Inch | Bolt-On | Limited Lifetime |
| 405S | Polished | Silver | Angled Cut | Rolled Edge | 4 Inch | 5 Inch | 12 Inch | Bolt-On | Limited Lifetime |
| 406S | Polished | Silver | Straight Cut | Rolled Edge | 4 Inch | 5 Inch | 12 Inch | Bolt-On | Limited Lifetime |
| 407S | Polished | Silver | Angled Cut | Sharp Edge | 4 Inch | 5 Inch | 12 Inch | Bolt-On | Limited Lifetime |
| 408B | Powder Coated | Black | Angled Cut | Beveled Edge | 4 Inch | 6 Inch | 12 Inch | Bolt-On | 1 year |
| 409S | Polished | Silver | Angled Cut | Beveled Edge | 4 Inch | 6 Inch | 12 Inch | Bolt-On | Limited Lifetime |
| 410S | Polished | Silver | Angled Cut | Rolled Edge | 4 Inch | 6 Inch | 12 Inch | Bolt-On | Limited Lifetime |
| 411B | Powder Coated | Black | Angled Cut | Rolled Edge | 4 Inch | 6 Inch | 18 Inch | Bolt-On | 1 year |
| 412S | Polished | Silver | Angled Cut | Rolled Edge | 4 Inch | 6 Inch | 18 Inch | Bolt-On | Limited Lifetime |
| 413S | Polished | Silver | Angled Cut | Rolled Edge | 4 Inch | 7 Inch | 18 Inch | Bolt-On | Limited Lifetime |
| 414B | Powder Coated | Black | Angled Cut | Rolled Edge | 4 Inch | 8 Inch | 18 Inch | Bolt-On | 1 year |
| 415S | Polished | Silver | Angled Cut | Rolled Edge | 4 Inch | 8 Inch | 18 Inch | Bolt-On | Limited Lifetime |
| 501B | Powder Coated | Black | Angled Cut | Beveled Edge | 5 Inch | 6 Inch | 12 Inch | Bolt-On | 1 year |
| 502S | Polished | Silver | Angled Cut | Beveled Edge | 5 Inch | 6 Inch | 12 Inch | Bolt-On | Limited Lifetime |
| 503S | Polished | Silver | Angled Cut | Rolled Edge | 5 Inch | 6 Inch | 12 Inch | Bolt-On | Limited Lifetime |
| 504S | Polished | Silver | Angled Cut | Rolled Edge | 5 Inch | 6 Inch | 18 Inch | Bolt-On | Limited Lifetime |
| 505B | Powder Coated | Black | Angled Cut | Rolled Edge | 5 Inch | 7 Inch | 18 Inch | Bolt-On | 1 year |
| 506S | Polished | Silver | Angled Cut | Rolled Edge | 5 Inch | 7 Inch | 18 Inch | Bolt-On | Limited Lifetime |
| 507S | Polished | Silver | Angled Cut | Rolled Edge | 5 Inch | 8 Inch | 18 Inch | Bolt-On | Limited Lifetime |

AIR CLEANERS AND ACCESSORIES

SpeedFX air cleaners combine classic styling with modern, high performance technology. Each cleaner is cast from high quality aluminum and buffed to a mirror shine. All styles include an air filter, upper plate, lower plate, and hardware.



Part # 2400



Part # 2500



Part # 2600



Part # 4300



Part #4354



Part # 7090



Part # 7113



Part # 7117



Part # 7114



Part # 7149



Part # 7220



Part # 7228



Part # 7292



Part # 7298



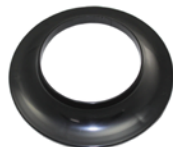
Part # 7307



Part # 7308



Part # 7309



Part # 7310



Part # 7311



Part # 7168



Part # 5002R



Part # 5002W

| Part # | DESCRIPTION |
|--------|--|
| 2400 | Air Cleaner Kit, 14" Dia 2/ 4 Barrel Carburetor / with Filter (Silver Aluminum) |
| 2500 | Air Cleaner Kit, 15" Oval with Filter / Deep Finned Top (Silver Aluminum) |
| 2600 | Air Cleaner Kit, 12" Deep Fin Oval with Filter / (Silver Aluminum) |
| 4300 | Chrome Air Cleaner Kit, 14" X 3" with Muscle Car Top / Paper Filter / Recessed Base |
| 4322 | Black Air Cleaner Kit, 14" X 3" with Muscle Car Top / Paper Filter / Recessed Base |
| 4354 | Air Cleaner Kit, 14" X 3" with Performance Top / Paper Filter / Flat Base (Chrome Steel) |
| 4355 | Air Cleaner Kit, 6" X 2" with Flat Top / Paper Filter / Raised Base (Chrome Steel) |
| 4446 | Air Cleaner Kit, 6" X 2" with Muscle Car Top / Paper Filter / Raised Base (Chrome Steel) |
| 4456 | Air Cleaner Kit, 14" X 3" with Muscle Car "327" Logo Top / Paper Filter / Hi-Lip Base (Chrome Steel) |
| 4466 | Air Cleaner Kit, 14" X 3" with Muscle Car "350" Logo Top / Paper Filter / Hi-Lip Base (Chrome Steel) |
| 4476 | Air Cleaner Kit, 14" X 3" with Muscle Car "383" Logo Top / Paper Filter / Hi-Lip Base (Chrome Steel) |
| 4486 | Air Cleaner Kit, 14" X 3" with Muscle Car "396" Logo Top / Paper Filter / Hi-Lip Base (Chrome Steel) |
| 4496 | Air Cleaner Kit, 14" X 3" with Muscle Car "400" Logo Top / Paper Filter / Hi-Lip Base (Chrome Steel) |
| 5105 | Air Cleaner Kit, 14" X 3" with Muscle Car "454" Logo Top / Paper Filter / Hi-Lip Base (Chrome Steel) |
| 5106 | Filter, Cone Medium 6.7" Universal with 3", 3.5", 4" Inlet (Blue) |
| 5107 | Filter, Cone Medium 6.7" Universal with 3", 3.5", 4" Inlet (Red) |
| 5108 | Filter, Cone Medium 6.7" Universal with 3", 3.5", 4" Inlet (White) |
| 7090 | Filter, Cone Large 8.75" Universal with 3", 3.5", 4" Inlet (Red) |
| 7113 | Filter, Cone 6.5" Universal with 3" Inlet (Red) |
| 7114 | Filter, Panel 13.375" x 6.688" x 1.125" GM/Dodge/Jeep®/Mitsubishi 1987-2007 (Red) |

| Part # | DESCRIPTION |
|--------|--|
| 7117 | Filter, Panel 13.375" x 6.688" x 1.125" Jeep® 1987-2000 (Red) |
| 7149 | Filter, Panel 13.375" x 6.688" x 1.125" Dodge 1994-2002 Ram (Red) |
| 7151 | Filter, Panel 13.375" x 6.688" x 1.125" Dodge 1997-2011 (Red) |
| 7168 | Air Cleaner Filter, 12" X 2" Oval (Paper) |
| 7220 | Air Cleaner Filter, 14" X 2" Round (Paper) |
| 7228 | Air Cleaner Filter, 14" X 3" Round (Paper) |
| 7292 | Air Cleaner Filter, 6" X 2-1/2" Round (Paper) |
| 7298 | Air Cleaner Filter, 4" X 2" Round (Paper) |
| 7307 | Air Cleaner Kit, 4" x 2" Deep Dish Top / Paper Filter / Flat Base (Chrome Steel) |
| 7308 | Air Cleaner Spacer, 1-5/8" Inch tall (Black Plastic) |
| 7309 | Wing Nut, Air Cleaner "Large Spinner" (Black/Chrome Steel) |
| 7310 | Air Cleaner Stud, 5-3/4" Offset with Hardware (White Zinc Steel) |
| 7311 | Smog PCV Tube, Universal with Hardware (Black Plastic) |
| 4300BK | Air Cleaner Stud Extension, 1-1/4" (White Zinc Steel) |
| 5002BL | Air Cleaner Riser, 3/4" Tall (Black Plastic) |
| 5002R | Air Cleaner Riser, 1/2" Tall (Black Plastic) |
| 5002W | Air Cleaner Riser, 2" Tall (Black Plastic) |
| 5003R | Air Cleaner Adapter, 5-1/8" To 2-5/8" Neck (Black Plastic) |
| 5011R | Air Cleaner Adapter, 5-1/8" To 3-1/16" Neck (Black Plastic) |

Limited 90 day warranty

TIMING ACCESSORIES



Part # 7122



Part # 7197



Part # 7217



Part # 7265

| Part # | DESCRIPTION |
|--------|--|
| 7122 | Timing Chain Cover, SB Chevy with Seal / Gaskets / Hardware (Chrome Steel) |
| 7197 | Timing Tab, SB Chevy 283-400 6"~7" (Chrome Steel) |
| 7217 | Timing Tab, with Pointer 8" SB Chevy (Chrome Steel) |

| Part # | DESCRIPTION |
|--------|---|
| 7265 | Timing Tab, BB Chevy 8" (Chrome Steel) |
| 8421 | Timing Tab, SB Chevy 283-400 6"~7" (Chrome Steel) |

Limited 90 day warranty

PULLEYS & KITS



Part # 8947



Part # 8948



Part # 8952



Part # 8957



Part # 8960



Part # 8961



Part # 9123



Part # 9124



Part # 9818



Part # 9830

| Part # | DESCRIPTION |
|--------|--|
| 8947 | Pulley, Power Steering Early GM Double Groove (Chrome Steel) |
| 8948 | Pulley, Power Steering Early GM Single Groove (Chrome Steel) |
| 8952 | Pulley, Water Pump SB Chevy SWP Double Groove (Chrome Steel) |
| 8954 | Pulley, Water Pump SB Chevy LWP Single Groove (Chrome Steel) |
| 8956 | Pulley, Water Pump SB Chevy LWP Double Groove (Chrome Steel) |
| 8957 | Pulley, Crank SB Chevy LWP Double Groove (Chrome Steel) |

| Part # | DESCRIPTION |
|--------|---|
| 8960 | Pulley, Water Pump BB Chevy LWP Double Groove (Chrome Steel) |
| 8961 | Pulley, Crank BB Chevy LWP Triple Groove (Chrome Steel) |
| 9123 | Fitting, Water Pump Chevy (Chrome Steel) |
| 9124 | Fitting, Intake Manifold Chevy (Chrome Steel) |
| 9818 | Bolt Kit, Water Pump Pulley Allen Head 4pc Kit (Chrome Steel) |
| 9830 | Bolt Kit, SB Chevy Intake Hex Head 12pc Kit (Chrome Steel) |

Limited 90 day warranty

WATER NECKS



Part # 7240



Part # 7261



Part # 7286



Part # 8455



Part # 8456

| Part # | DESCRIPTION |
|--------|---|
| 7240 | Water Neck, Late Chevy O'Ring Style (Chrome Zinc Alloy) |
| 7261 | Water Neck, Oldsmobile 330-350-425-455 Gasket Style (Chrome Zinc Alloy) |
| 72620 | Water Neck, Ford 351C O'Ring Style (Chrome Zinc Alloy) |
| 72850 | Water Neck, Pontiac V8 O'Ring Style (Chrome Zinc Alloy) |
| 7286 | Water Neck, Mopar 273-440 Gasket Style (Chrome Zinc Alloy) |
| 72870 | Water Neck, Chevy Straight O'Ring Style (Chrome Zinc Alloy) |

| Part # | DESCRIPTION |
|--------|--|
| 72880 | Water Neck, Chevy Angle O'Ring Style (Chrome Zinc Alloy) |
| 72890 | Water Neck, Ford 289-302, 351W O'Ring Style (Chrome Zinc Alloy) |
| 8455 | Water Neck, Polished Aluminum 45 Degree Swivel with Gasket fits all Small and Big Block Chevy V8 |
| 8456 | Water Neck Polished Aluminum 90 Degree Swivel with Gasket fits all Small and Big Block Chevy V8 |
| 8459 | Water Neck Polished Aluminum 15 Degree Swivel with Gasket fits all Small and Big Block Chevy V8 |

Limited 90 day warranty

ALTERNATORS, STARTERS, AND ACCESSORIES

ALTERNATORS

Excellent output at idle with proof of performance tag. Alternators have heavy-duty diodes and oversized bearings.



Part # 37127FX



Part # 9000FX



Part # 6067



Part # 6068



Part # 6069



Part # 6072



Part # 6073



Part # 6074



Part # 6076



Part # 6082



Part # 6087



Part # 300

| Part # | DESCRIPTION |
|---------|--|
| 17127FX | Alternators, 65 Amps |
| 17273FX | Alternators, 80 Amps |
| 37127FX | Alternators, 100 Amps |
| 7127FX | Alternators, 65 Amps |
| 6067 | Alternator Arm Bracket (Chrome Steel) |
| 6068 | Alternator / Generator Slide Bracket, SB Chevy (Chrome Steel) |
| 6069 | Alternator / Generator Header Bracket, SB Chevy (Chrome Steel) |
| 6072 | Alternator Bracket, SB Chevy "OEM" LWP (Chrome Steel) |
| 6073 | Alternator Bracket, SB Chevy "OEM" LWP (Chrome Steel) |
| 6074 | Alternator Bracket, BB Chevy "OEM" LWP (Chrome Steel) |
| 6076 | Alternator Bracket, 1969-75 SB Chevy & 1969-up BB Chevy Upper LWP (Chrome Steel) |
| 6077 | Alternator Bracket, 1976-86 SB Chevy Upper LWP (Chrome Steel) |

| Part # | DESCRIPTION |
|--------|---|
| 6079 | Alternator Bracket, SB Chevy Low Mount (Chrome Steel) |
| 6082 | Alternator Bracket, 1965-73 SB Ford (Chrome Steel) |
| 6087 | Alternator Bracket, BB Chevy Lower LWP (Chrome Steel) |
| 9000FX | Classic GM Small Block & BB V8 applications with a compression ratio under 11.0:1. 153 or 168 Tooth |
| 9053FX | 94-00 Dodge Ram 2500 & 3500 5.9L Diesel applications. 173 Tooth |
| 9600FX | Classic GM SB & BB V8 applications with a compression ratio under 12.0:1. 158 or 163 Tooth |
| 9603FX | Classic Ford Small Block V8 applications with a compression ratio under 12.0:1. 157 or 164 Tooth |
| 9612FX | Chevrolet Ram Jet 350 / 502 Engines. 168 Tooth |
| 300 | 1000 Rush Amps |

Limited 90 day warranty

CARBURETOR ACCESSORIES



Part # 6048



Part # 6052



Part # 6056



Part # 6057



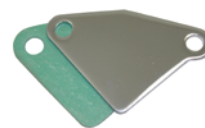
Part # 7604



Part # 7605



Part # 7623



Part # 7631



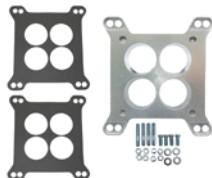
Part # 9009



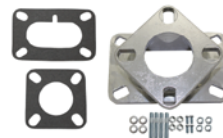
Part # 9122



Part # 9127



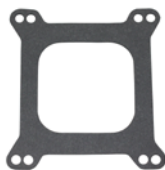
Part # 9148



Part # 9149



Part # 9173



Part # 9174



Part # 9175



Part # 9217



Part # 9218



Part # 9219



Part # 9219-1



Part # 9270



Part # 9271



Part # 9274



Part # 9278



Part # 9279



Part # 9285



Part # 9715

| Part # | DESCRIPTION |
|--------|---|
| 6048 | Throttle Choke Cable, 6' (Braided Stainless Steel) |
| 6052 | Throttle Return Spring Bracket, with Dual Springs Kit (Chrome Steel) |
| 6056 | Throttle Return Spring Bracket, Holley Kit with Hardware (Chrome Steel) |
| 6057 | Throttle Return Bracket, Universal (Chrome Steel) |
| 7604 | Block Off Plate, BB Chevy Fuel Pump with Gasket & Hardware (Chrome Steel) |
| 7605 | Block Off Plate, SB Chevy Fuel Pump with Gasket & Hardware (Chrome Steel) |
| 7623 | Mounting Plate, Small Block Chevy Fuel Pump with Gasket & Hardware (Chrome Steel) |
| 7631 | Block-Off Plate, SB Chevy Fuel Pump E.G.R. Manifold with Gasket (Chrome Steel) |
| 9009 | Vacuum Advance Cap Kit Universal and fits GM Chevy Ford and Mopar |
| 9122 | Carb Stud Kit, 3-1/4" Long 4pc Set (White Zinc Steel) |
| 9127 | Carb Stud Kit, 1-5/8" Long 4pc Set (White Zinc Steel) |
| 9128 | Carb Stud Kit, 2" Long 4pc Set (White Zinc Steel) |
| 9129 | Carb Stud Kit, 2-1/2" Long 4pc Set (White Zinc Steel) |
| 9148 | Carburetor Adapter Kit, 4bbl to Small 4bbl 1/2" Ported with Gaskets/Hardware (Aluminum) |

| Part # | DESCRIPTION |
|--------|---|
| 9149 | Carburetor Adapter Kit, Rochester 2bbl with Gaskets/Hardware (Aluminum) |
| 9173 | Gasket, Carb Base Holley/Carter ABF 4BBL Ported (Fibre) |
| 9174 | Gasket, Carb Base Holley 4BBL Open Center (Fibre) |
| 9175 | Gasket, Carb Base Edelbrock Rochester QuadraJet 4BBL Ported (Fiber) |
| 9217 | Carb Linkage Bracket, Standard Transmission (Chrome Steel) |
| 9218 | Carb Linkage Bracket, Automatic Transmission (Chrome Steel) |
| 9219 | Carb Linkage Plate, with Brackets (Chrome Steel) |
| 9270 | Fuel Filter, 3/8" Inlet/Outlet (Chrome Aluminum) |
| 9271 | Fuel Filter, 5/16" Inlet/Outlet (Chrome Steel With Glass) |
| 9272 | Fuel Filter, 3/8" Inlet/Outlet (Chrome Steel With Glass) |
| 9274 | Fuel Filter, 3/8" Inlet/Outlet (Chrome Steel) |
| 9278 | Fuel Line, Holley 9-3/16" (Chrome Steel) |
| 9279 | Fuel Line, Holley 8-21/32" (Chrome Steel) |
| 9285 | Carburetor Cover, 5-1/8" Neck with Hardware (Blue Plastic) |
| 9715 | Gauge, Fuel Pressure Mechanical 0-15 PSI Dry (Chrome Steel with White Face) |
| 92191 | Morse Cable Bracket (Chrome Steel) |

Limited 90 Day Warranty

RADIATOR ACCESSORIES



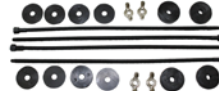
Part # 7610



Part # 7611



Part # 7613



Part # 7617



Part # 9963

| Part # | DESCRIPTION |
|--------|--|
| 7610 | Fan Shroud, 3" with Hardware Installation Kit (Chrome Steel) |
| 7611 | Fan Shroud, 5" with Hardware Installation Kit (Chrome Steel) |
| 7613 | Radiator Support, 1970-81 GM 28-11/16" X 5-1/2" with Hardware (Chrome Steel) |
| 7615 | Radiator Support, 31-1/8" X 5-3/4" with Hardware (Chrome Steel) |

| Part # | DESCRIPTION |
|--------|---|
| 7617 | Fan Shroud Installation Kit (Black Plastic) |
| 9963 | Overflow Tank, Radiator 3" X 10" with Hardware (Polished Stainless Steel) |
| 9973 | Overflow Tank, Radiator 2" X 13" with Hardware (Polished Stainless Steel) |

Limited 90 day warranty

STEERING AND BRAKE ACCESSORIES



Part # 6042



Part # 6054



Part # 6062



Part # 6064



Part # 9965

| Part # | DESCRIPTION |
|--------|--|
| 9965 | Overflow Tank, Power Steering or Brake Fluid 3" X 9" with Hardware (Chrome Aluminum) |
| 6042 | Power Steering Cap Cover, Chevy/GMC (Chrome Plastic) |
| 9971BK | Vacuum Reservoir Tank, w/Hardware (Black Steel) |

| Part # | DESCRIPTION |
|--------|--|
| 6054 | Master Cylinder Cover, AMC/Ford Single Bail 2-3/4" x 5-3/4" (Chrome Steel) |
| 6063 | Master Cylinder Cover, GM Dual Bail 3" x 5-3/4" (Chrome Steel) |
| 6064 | Master Cylinder Cover, GM Single Bail 2-3/8" x 5" (Chrome Steel) |
| 6062 | Master Cylinder Cover, GM Single Bail 3" x 5-5/8" (Chrome Steel) |

Limited 90 day warranty

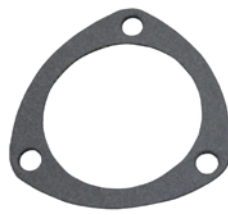
HEADER ACCESSORIES



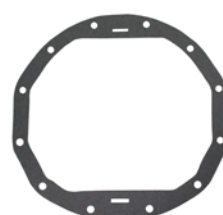
Part # 3805



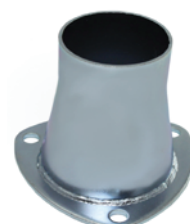
Part # 3806



Part # 3813



Part # 4930



Part # 6070

| Part # | DESCRIPTION |
|--------|---|
| 3806 | Gasket, Header Collector 2-1/2" Diameter 3-Hole (Fibre) |
| 3813 | Gasket, Header Collector 3" Diameter 3-Hole (Fibre) |
| 6070 | Header Reducer, 3" (Gold Zinc Steel) |
| 3805 | Header Reducers, 3" Diameter 3-Hole w/Gaskets & Hardware (White Zinc Steel) |

| Part # | DESCRIPTION |
|--------|--|
| 4940 | Gasket, Differential Cover Dana 60 & Dana 70 10-Bolt (Fibre) |
| 4930 | Gasket, Differential Cover GM 12-Bolt (Fibre) Master Cylinder Cover, GM Single Bail 3" x 5-5/8" (Chrome Steel) |

Limited 90 day warranty

DISTRIBUTORS AND ACCESSORIES

H.E.I. DISTRIBUTORS

- 6061-T6 polished billet shaft
- High strength and quality cap
- Solid brass terminals
- Fully adjustable vacuum advance
- Chromoly steel gear
- Easy one wire hook up
- High performance ignition module
- Limited 90 day warranty



Part # 3102



Part # 3104



Part # 3105



Part # 3106



Part # 3107



Part # 3108



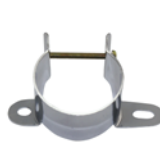
Part # 6055



Part # 6058



Part # 6060



Part # 6061



Part # 7625



Part # 7626

| Part # | DESCRIPTION |
|--------|--|
| 3100 | H.E.I. Distributors, 262-454 Cu. In. Big Block / Small Block Chevrolet Engines - Red Cap |
| 3101 | H.E.I. Distributors, 289/302 cu. In. Small Block Ford Engines - Blue Cap |
| 3102 | H.E.I. Distributors, SB Ford 351W - Blue Cap |
| 3103 | H.E.I. Distributors, SB Ford 351C & 429 -460 - Blue Cap |
| 3104 | H.E.I. Distributors, Pontiac 5.7L/350 cu. In. 6.6L/400 cu. In. / 7.5L /455 cu.in - Black Cap |
| 3105 | H.E.I. Distributors, Chrysler Small Block V8 - Black Cap |
| 3106 | H.E.I. Distributors, SB Chrysler V8 - Black Cap |
| 3107 | H.E.I. Distributors, AMC Jeep® 290-401 Cubic Inch V8 Engine - Red Cap |
| 3108 | H.E.I. Distributors, AMC Jeep® 232-258 CLY/CJ5/CJ7/Wrangler / Wagoneer - Black Cap |
| 3109 | H.E.I. Distributors, Ford FE 352-428 - Black Cap |

| Part # | DESCRIPTION |
|--------|--|
| 3111 | H.E.I. Distributors, Chevrolet 230/250/292/CLY -Black Cap |
| 3112 | H.E.I. Distributors, Chevrolet SB/BB/ 262-454 -V8 Electronic ready to use , Remote Mount Coil, Black Cap |
| 6055 | H.E.I. Distributors, Coil Bracket, Ford (Chrome Steel) |
| 6058 | H.E.I. Distributors, Advance Curve Kit, Chevy/ GM (Chrome Steel) |
| 6060 | H.E.I. Distributors, Coil Cover and Bracket Kit Chrome Steel |
| 6061 | H.E.I. Distributors, Coil Bracket, GM Stand-Up (Chrome Steel) |
| 7606 | H.E.I. Distributors, Distributor Hold Down, Chevy OEM Style with Hardware (Chrome Steel) |
| 7625 | H.E.I. Distributors, Distributor Hold Down, Ford with Hardware (Chrome Steel) |
| 7626 | H.E.I. Distributors, Distributor Hold Down Clamp, Chevy Competition Style (Chrome Steel) |

HOOD PIN KITS



Part # 7702



Part # 7703



Part # 7708



Part # 7709



Part # 7712

| Part # | DESCRIPTION |
|--------|--|
| 7702 | Hood Pin Kit, with Hair Pins and Lanyards (Chrome Steel) |
| 7703 | Hood Pin Kit, with Hair Pins and Lanyards (Chrome Steel) |
| 7708 | Flip-Over Clips, 3/16" - 2Pcs (Chrome Steel) |

| Part # | DESCRIPTION |
|--------|--|
| 7709 | Hood Lock Kit, Deluxe Style (Chrome Steel) |
| 7712 | Hood Pin Kit, with Flip-Over Clips 1/2 Inch Diameter Pins (Chrome Steel) |

MISC



Part # 8215

| Part # | DESCRIPTION |
|--------|---|
| 8215 | Mirror, Interior Car/Truck (Polished Stainless Steel) |

Limited 90 day warranty

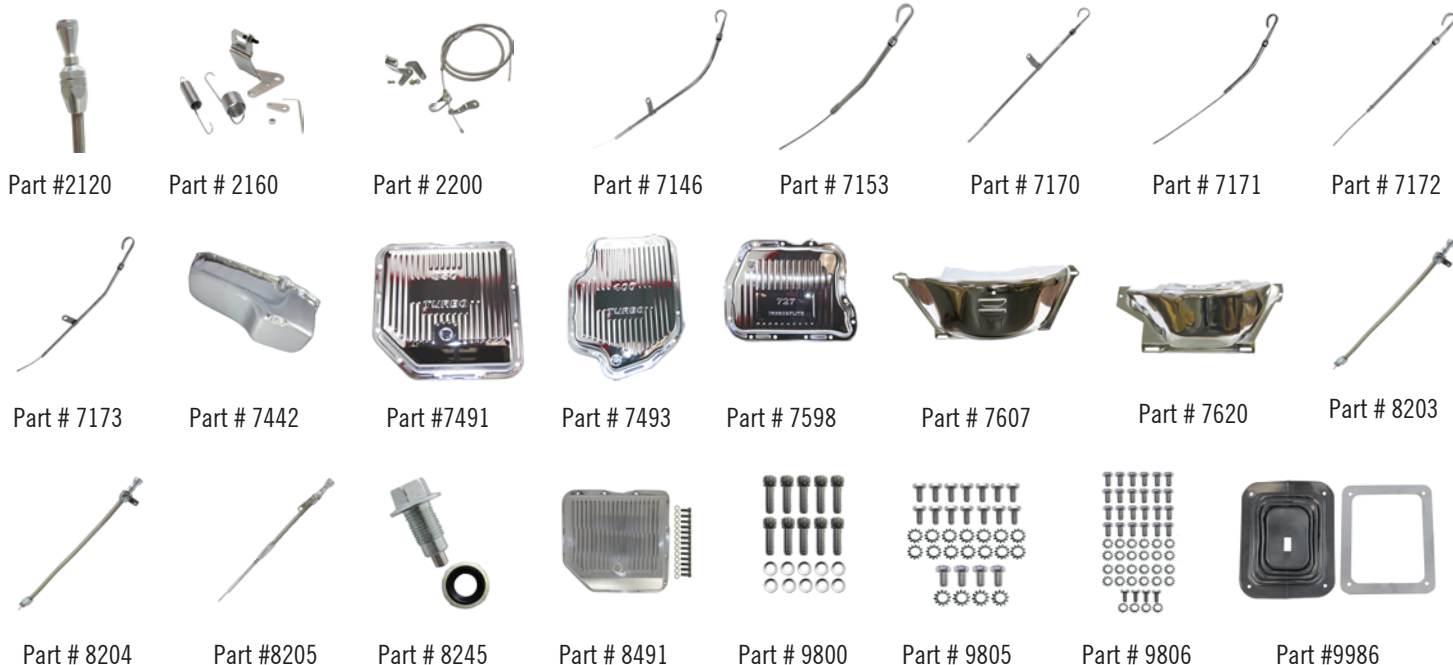
OIL / TRANSMISSION PANS AND ACCESSORIES

DIPSTICKS

These braided stainless steel dipsticks are available for engines and transmissions and feature two mounting styles - engine mount or firewall mount. Their flexible stainless design features the ability to customize its length and mount how and where you like. Comes with detailed instructions and backed by a limited lifetime warranty.

TRANSMISSION KICKDOWN CABLES

Replace your old, worn out kickdown cable with a quality, brand-new replacement. All needed hardware is included.



| Part # | DESCRIPTION |
|--------|---|
| 2120 | Dipsticks, Small Block Chevrolet Engine (1979 and Earlier) |
| 2130 | Dipsticks, Ford 302 , Engine |
| 2133 | Dipsticks, Big Block Chevrolet Engine |
| 2140 | Dipsticks, GM LS1, Engine |
| 2144 | Dipsticks, Small Block Chevrolet (1980-Up) |
| 2150 | Dipsticks, Ford C4, Transmission |
| 2160 | Dipsticks, GM Applications |
| 2190 | Dipsticks, Mopar 727 |
| 2200 | Dipsticks, Ford C4 |
| 6000 | Dipsticks, Universal, Transmission |
| 7146 | Dipstick, Engine 1980-82 SB Chevy (Chrome Steel) |
| 7153 | Dipstick, Engine 1965-79 Pontiac (Chrome Steel) |
| 7170 | Dipstick, Engine BB Chevy 396-454 (Chrome Steel) |
| 7171 | Dipstick, Engine SB Chevy 265-350 (Chrome Steel) |
| 7172 | Dipstick, Engine SB Chrysler 318-340-360 (Chrome Steel) |
| 7173 | Dipstick, Engine BB Chrysler 383-426-440 (Chrome Steel) |
| 7174 | Dipstick, Engine SB Ford 351W (Chrome Steel) |
| 7176 | Dipstick, Engine 1982-85 Camaro/Firebird 305-350 (Chrome Steel) |
| 7178 | Dipstick, Engine Oldsmobile V8 (Chrome Steel) |
| 7400 | Dipstick, Transmission Pan TH350 27" Long (Chrome Steel) |

Limited 90 day warranty

| Part # | DESCRIPTION |
|--------|---|
| 7401 | Dipstick, Transmission GM TH400 24" Long (Chrome Steel) |
| 7403 | Dipstick, Transmission Chevy Powerglide (Chrome Steel) |
| 7442 | Dipsticks, Oil Pan, 1955-79 SB Chevy 283-350 (Chrome Steel) |
| 7491 | Dipsticks, Transmission Pan, Turbo 350 Finned Stock Depth (Chrome Steel) |
| 7493 | Dipsticks, Transmission Pan, Turbo 400 Finned Stock Depth (Chrome Steel) |
| 7598 | Dipsticks, Transmission Pan, Chrysler 727 Finned (Chrome Steel) |
| 7607 | Dipsticks, Flywheel Dust Cover, GM TH350 / TH400 / 700R4 (Chrome Steel) |
| 7620 | Dipsticks, Flywheel Dust Cover, GM 700R4 (Chrome Steel) |
| 8203 | Dipstick, Transmission GM TH350/400 "Flexible" Firewall Mount (Chrome Aluminum / Braided Stainless Steel) |
| 8204 | Dipstick, Transmission Chevy 700R4 "Flexible" Firewall Mount (Chrome Aluminum / Braided Stainless Steel) |
| 8205 | Dipstick, Engine Late SB Chevy "Flexible" (Chrome Aluminum / Braided Stainless Steel) |
| 8245 | Dipsticks, Drain Plug, Magnetic with Washer (Unplated Steel) |
| 8491 | Dipsticks, Transmission Pan, GM Turbo 350 Finned with Gasket/Hardware (Polished Aluminum) |
| 9800 | Dipsticks, Bolt Kit, Aluminum Timing Chain Cover Allen Head 10pc Kit Chevy V8 (Chrome Steel) |
| 9805 | Dipsticks, Bolt Kit, SB Chevy Oil Pan Hex Head 14pc Kit (Chrome Steel) |
| 9806 | Dipsticks, Bolt Kit, BB Chevy Oil Pan Hex Head 24pc Kit (Chrome Steel) |
| 9986 | Dipsticks, Universal Shifter Boot with Rubber Boot and Chrome Plated Trim Ring |

VALVE COVERS AND ACCESSORIES

ENGINE PARTS & ACCESSORIES

SpeedFX valve covers and breather caps bring back the look of yesterday, while offering the precision fitment of today's modern leak-proof technology. Each cover is cast from high quality aluminum and buffed to a mirror shine! To ensure maximum performance, all valve covers include baffles and hardware. Available in several styles, does not include oil cap or gaskets.



Part # 2900



Part # 3200



Part # 3300



Part # 7182



Part # 7184



Part # 7198



Part # 7204



Part # 7219



Part # 7251



Part # 7257



Part # 7275



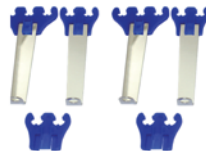
Part # 7314



Part # 7315



Part # 7338



Part # 7348



Part # 7340



Part # 8196

| Part # | DESCRIPTION |
|--------|---|
| 2900 | Small Block Chevy, Tall |
| 3200 | Small Block Ford, Tall |
| 3300 | Valve Cover Grommet |
| 6115 | Grommet, for Steel Ford Valve Cover Breather 3/4" ID (Black Rubber) |
| 7182 | Breather Cap, Push-In with 1/2" PCV Tube (Chrome Steel) |
| 7184 | Spreader Bars, Valve Cover BB Chevy (Chrome Steel) |
| 7198 | Breather Cap, Twist-On (Chrome Steel) |
| 7199 | Breather Cap, Twist-On with Tube (Chrome Steel) |
| 7204 | Oil Filler Cap, Push-In (Chrome Steel) |
| 7205 | Oil Filler Tube, Chevy (Chrome Steel) |
| 7215 | Oil Cap (Chrome Steel) |
| 7219 | Grommet, for Aluminum Valve Cover Breather 1" ID (Black Rubber) |
| 7223 | Oil Filler Cap, Twist-On (Chrome Steel) |
| 7250 | Gaskets, Valve Cover 1955-86 SB Chevy 265-400 (Cork) |
| 7251 | Gaskets, Valve Cover 1955-86 SB Chevy 265-400 (Black Neoprene) |
| 7257 | Mini Hold Down Tabs, Valve Cover - set of 8 (Chrome Steel) |
| 7270 | Spreader Bars, Valve Cover SB Chevy - set of 4 (Chrome Steel) |
| 7271 | Breather Cap, Push-In Hi-Perf Washable Filter (Chrome Steel) |
| 7272 | Breather Cap, Push-In (Chrome Steel) |
| 7275 | Breather Cap, Mopar Push-In (Chrome Steel) |
| 7281 | Grommet, for Steel Valve Cover Breather 1" ID (Black Rubber) |
| 7282 | Gaskets, Valve Cover Chrysler 383-426-440 Wedge V8 (Black Neoprene / Steel) |
| 7314 | Breather Mini Filter, Crankcase Vent fits 3/8" to 1/2" Tubes (Red) |
| 7315 | Breather Mini Filter, Crankcase Vent fits 3/8" to 1/2" Tubes (White) |

| Part # | DESCRIPTION |
|--------|--|
| 7338 | Wire Separators, Deluxe (Black Plastic) |
| 7339 | Wire Separators, Deluxe (Blue Plastic) |
| 7340 | Wire Separators, Race Style (Red Plastic) |
| 7342 | Wire Separators, Deluxe (Red Plastic) |
| 7343 | Wire Separators, Race Style (Chrome Plastic) |
| 7348 | Wire Looms, Straight Up (Blue Plastic / Chrome Steel) |
| 7394 | Wing Nut, "Y" Style 1/4"-20 X 3-1/2" - set of 4 (Chrome Steel) |
| 7408 | Chrome T-Bar Valve Cover Hold Downs 4-1/4 Inch Long with 1/4 Inch-20 Threads (pack of 4) |
| 7409 | Chrome T-Bar Valve Cover Hold Downs 5 Inch Long with 1/4 Inch-20 Threads (pack of 4) |
| 7483 | Grommet, for Steel Valve Cover Breather 3/4" ID (Black Rubber) |
| 7484 | Grommet, for Steel Valve Cover Breather 3/4" ID (Black Rubber) |
| 7507 | Chrome Spark Plug Wire Loom Set, Angled - Universal for 7-9MM Wires with Black Plug Wire Saddles |
| 7510 | Chrome Deluxe Linear Spark Plug Wire Loom Kit fits GM Chevy Ford and Mopar and other V8 Applications |
| 7526 | Oil Plug, Push-In with Logo (Black Rubber / Chrome Steel) |
| 8196 | Valve Covers, 1958-86 SB Chevy 283-400 Short (Chrome Steel) |
| 8198 | Valve Covers, 1958-86 SB Chevy 283-350 OEM Short (Chrome Steel) |
| 8331 | Valve Covers, 1987-99 SB Chevy 5.0 - 5.7L (Chrome Steel) |
| 9841 | Bolt Kit, SB Chevy 5.0L & 5.7L Steel Center Bolt Valve Cover 8pc Kit (Chrome Steel) |
| 71992 | Breather Cap, Twist-On (Chrome Steel) |
| 81943 | Valve Covers, 1962-85 SB Ford 260-351W 5.0L Tall (Chrome Steel) |
| 7199S | Breather Cap, PCV Push-In (Chrome Steel) |
| 74820 | Wing Nut, T-Bar 5-3/8" Tall - set of 4 (Chrome Steel) |

Limited 90 day warranty

US SALES

800-521-9999

Español

800-521-9910

New Business Development

800-432-8063

CANADA SALES

800-257-7190

New Business Development

800-257-7190 ext. 6235

INTERNATIONAL SALES

570-603-2005

2018 Catalog. Copyright © 2018 Keystone Automotive Operations, Inc. All rights reserved. All text, graphics, pictures, logos, and the selection and arrangement thereof is the exclusive property of the Publisher, or its content supplier. No portion of this catalog, including images, may be copied or reproduced in any form without the prior written consent of the Publisher. Not responsible for typographical errors.

FX-Products.com

Distributed Exclusively By

Keystone Automotive Operations, Inc.

